



MONTHLY MEMBERSHIP PROGRESS REPORT

District A 2

Results as of: 12/31/2017

GMT: CHRIS LEWIS

LOCATION ONTARIO

GMT CA

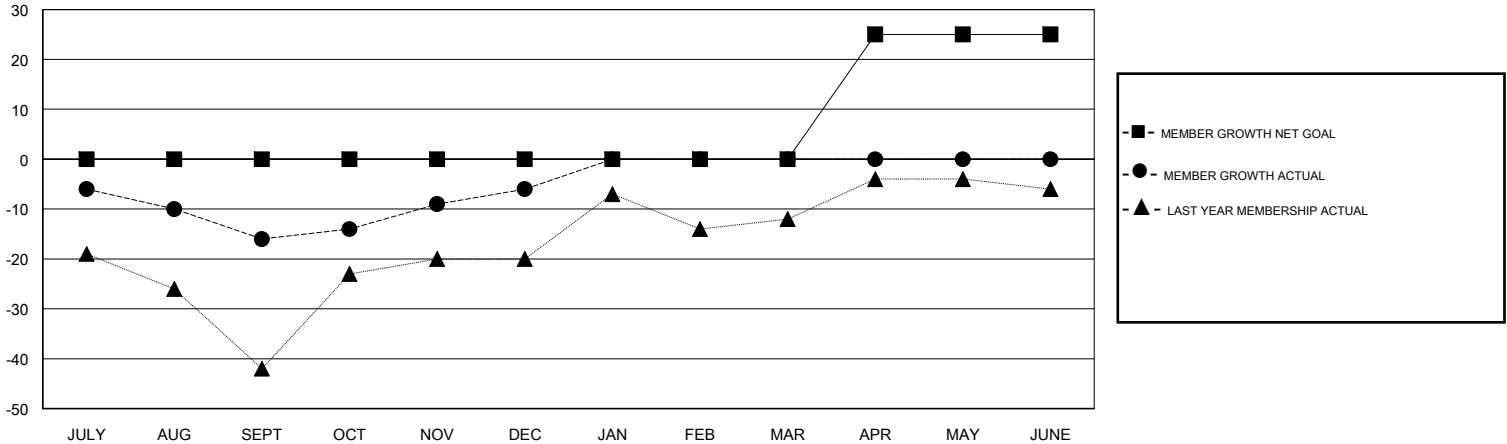
Clubs			
RESULTS FOR 2017-2018			
QUARTER	NEW CLUB GOAL	NEW CLUBS	DROPPED CLUBS
JULY/AUG/SEPT	0	0	0
OCT/NOV/DEC	0	0	0
JAN/FEB/MAR	0	0	0
APR/MAY/JUNE	1	0	0

Members			
RESULTS FOR 2017-2018			
QUARTER	MEMBER GROWTH NET GOAL	MEMBER GROWTH ACTUAL	DROPPED MEMBERS ACTUAL (including transfers)
JULY/AUG/SEPT	0	11	22
OCT/NOV/DEC	0	46	36
JAN/FEB/MAR	0	0	0
APR/MAY/JUNE	25	0	0

GOALS AND ACTUAL NEW CLUBS CUMULATIVE



GOALS AND ACTUAL MEMBERS CUMULATIVE



DROPPED CLUBS: 0	20 CLUBS OF 41 ADDED 1 OR MORE NEW MEMBERS	<u>GENDER DISTRIBUTION</u>
		MALE 1,105 (87.21%)
		FEMALE 162 (12.79%)
		Women Percentage Fiscal Year Goal: 14%
<u>DROPPED MEMBERS</u>	CLICK HERE FOR CUMULATIVE MEMBERSHIP DATA	TOTAL FAMILY UNIT MEMBERS 125
DECEASED 13		FAMILY MEMBERS PAYING HALF DUES 64
CLUB CANCELLED 0		
OTHER 45		
TOTAL 58		